



SIMPLE STRUCTURAL VERIFICATION ACCORDING TO STANDARDS

Dear structural engineer,

We would like to express our gratitude for downloading SDC Verifier, our powerful software solution designed to assist you in tackling complex engineering challenges. Our team has put in countless hours of hard work to develop an intuitive and reliable program that can handle a wide range of tasks related to structural engineering and finite element analysis.

We understand that you may be facing many challenges in your field, and we sincerely hope that our software will help you overcome them with ease. With SDC Verifier, you can streamline your workflow, increase accuracy, and save valuable time and resources.

Thank you again for choosing SDC Verifier. We are confident that our software will meet your needs and exceed your expectations, and we look forward to supporting you every step of the way.

Best regards,

The SDC Verifier Team

CONTENT

- What is SDC Verifier 2
- Installation and trial license request 7
- Tutorials and resources 11
- Contacts 13

WHAT IS SDC VERIFIER

In 1998, engineer and Delft University professor *Wouter van den Bos* started the company to end engineers' frustration that routine and repetitive work consumes up to 50% of the time while checking and interpreting the FEA output. Since then, the company has grown from a solopreneur into an international business with offices in the Netherlands, Ukraine, and Poland and continues to expand.

Our FEA consultancy services are widely used by industry leaders globally. SDC Verifier software is well known for its intuitive automatic tools and features for designing and certifying complex engineering structures.

The company structure, combining the synergy of engineering consultancy and software development, creates unique opportunities for the team to offer, test, and improve ideas and features instantly and fix bugs at the development stage.

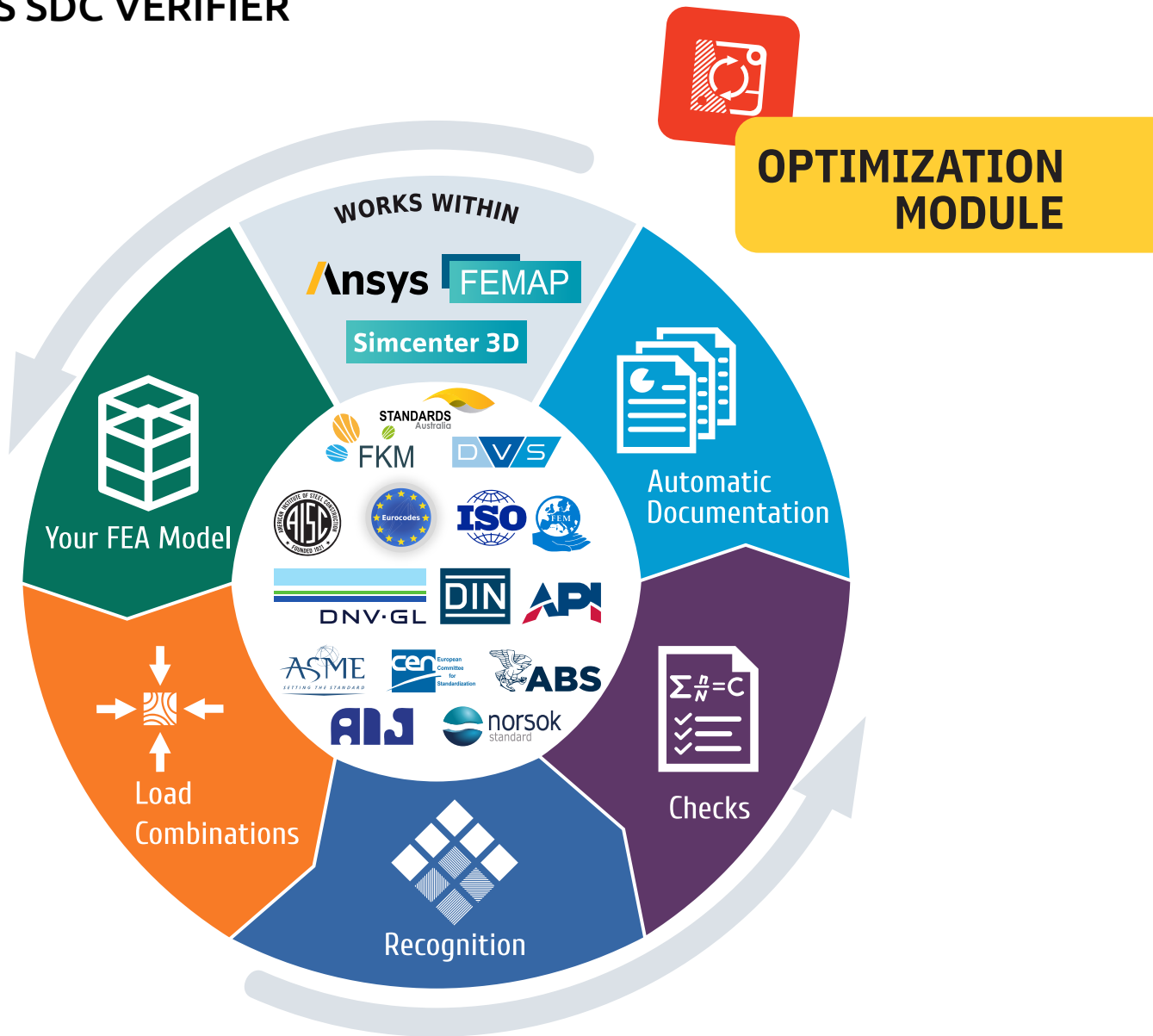
Technology Partner of



Proud Member of



WHAT IS SDC VERIFIER



- *Code checking in FEA programs*
- *Load combinations for different types of general load cases*
- *Automatic recognition of structural members*
- *Popular Standards available (30+, constantly updating)*
- *Standards can be customized*
- *Total calculation procedure saved*
- *Extensive reporting*
- *Design Optimization*
- *Excellent support team*
- *Created by engineers for engineers*

AVAILABLE STANDARDS

SDC Verifier checks your model according to numerous [standards](#) from the built-in library or custom ones. SDC Verifier's library contains 30+ different standards and continuously grows. The checks are entirely open, so the user can customize, modify or even write his own formulas.



AS 3990 (1993)



AIJ (2005 Edition, 2017)



DIN 15018



NORSOK N004



AISC 89 & 2010



FEM 1.001



Eurocode 3



ISO 19902



DNV 1995 & 2010



ASME VIII (Div2, 2010);
ASME B31.8-2018



API 2A RP



EN 13001



ABS 2004 & 2014



FKM (5th (2003);
6th(2012) editions)



DVS 1608 (2010);
DVS 1612 (2014)

- *ABS Plate Buckling (2004)*
- *ABS Plate Buckling (2014)*
- *AIJ-2017 (2005 Edition)*
- *AISC ASD 1989 Members (9th, 1989)*
- *AISC 360-10 Members (14th, 2010)*
- *AISC 360-10 Bolts (14th, 2010)*
- *AS 3990 (1993) (Mechanical equipment—Steelwork)*
- *API RP 2A-LRFD (1st, 1993)*
- *API RP 2A-WSD (21st, 2007)*
- *DIN 15018 (1984)*
- *DIN DVS 1608 (June 2010)*
- *DIN DVS 1612 (August 2014)*
- *DNV-RP-C203 Fatigue (2016)*
- *DNV CN30 Plate Buckling (1995)*
- *DNV RP-C201 Plate/Stiffener Buckling (2010)*
- *DNV OS-C101-LRFD Weld Strength (2011)*
- *DNV OS-C201-WSD Weld Strength (2011)*
- *EN13001 (2018)*
- *Eurocode 3 Members (EN 1993-1-1, 2005)*
- *Eurocode 3 Weld Strength (EN 1993-1-8, 2005)*
- *Eurocode 3 Fatigue (EN 1993-1-9, 2005)*
- *Eurocode 3 Bolt Check (EN 1993-1-8, 2005)*
- *Eurocode 3 Fire Design (EN 1993-1-2, 2005)*
- *Eurocode 3 Connections (EN 1993-1-8, 2005)*
- *Eurocode 3 Plate Buckling (EN 1993-1-5, 2006)*
- *FEM 1.001 (3rd, 1998)*
- *FKM – Analytical strength assessment (5th revised edition, 2003)*
- *FKM – Analytical strength assessment (6th edition, 2012)*
- *ISO 19902 (1st, 2007)*
- *ISO 19902 (2nd, 2020)*
- *Norsok N004 (rev.3, 2013)*

WHAT IS SDC VERIFIER. FEATURE COMPARISON

There are three levels of licensing for SDC Verifier:

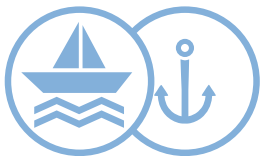
| SDC Verifier Apps | SDC Verifier Professional | SDC Verifier Enterprise |
|--|--|--|
| Load Combinations | Load Combinations | Load Combinations |
| Peak Finder | Peak Finder | Peak Finder |
| Governing Loads | Governing Loads | Governing Loads |
| FreeBodies | FreeBodies | FreeBodies |
| Tools | Tools | Tools |
| Reporting | Reporting | Reporting |
| | Joint Finder | Joint Finder |
| The following apps are available: | Beam Member Finder | Beam Member Finder |
| Weld Strength App | Beam Sections Finder | Beam Sections Finder |
| Fatigue App | Panel Finder | Panel Finder |
| Plate Buckling App | Weld Finder | Weld Finder |
| Beam Member Check App | Specific Loading | Specific Loading |
| Bolt Check App | 30+ predefined standards | 30+ predefined standards |
| AISC Beam Check App | Custom Checks | Custom Checks |
| FKM App and more | | Design Optimization |
| Learn more about the apps here | | Automation (Open API) |
| <i>Single PC licenses only</i> | <i>Single PC, floating, or global licenses (multi-country)</i> | <i>Single PC, floating, or global licenses (multi-country)</i> |

CUSTOMERS AND INDUSTRIES

100+ Customers around the world



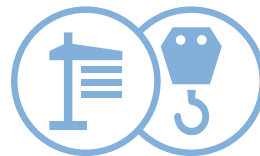
APPLICABLE IN FOLLOWING INDUSTRIES



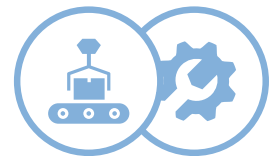
OFFSHORE AND MARITIME



OIL AND GAS



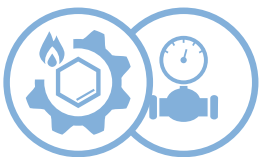
HEAVY LIFTING



MACHINERY EQUIPMENT



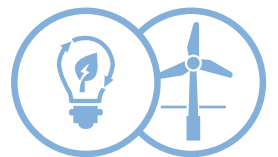
CIVIL ENGINEERING



PIPES AND PETROCHEMICAL



AEROSPACE

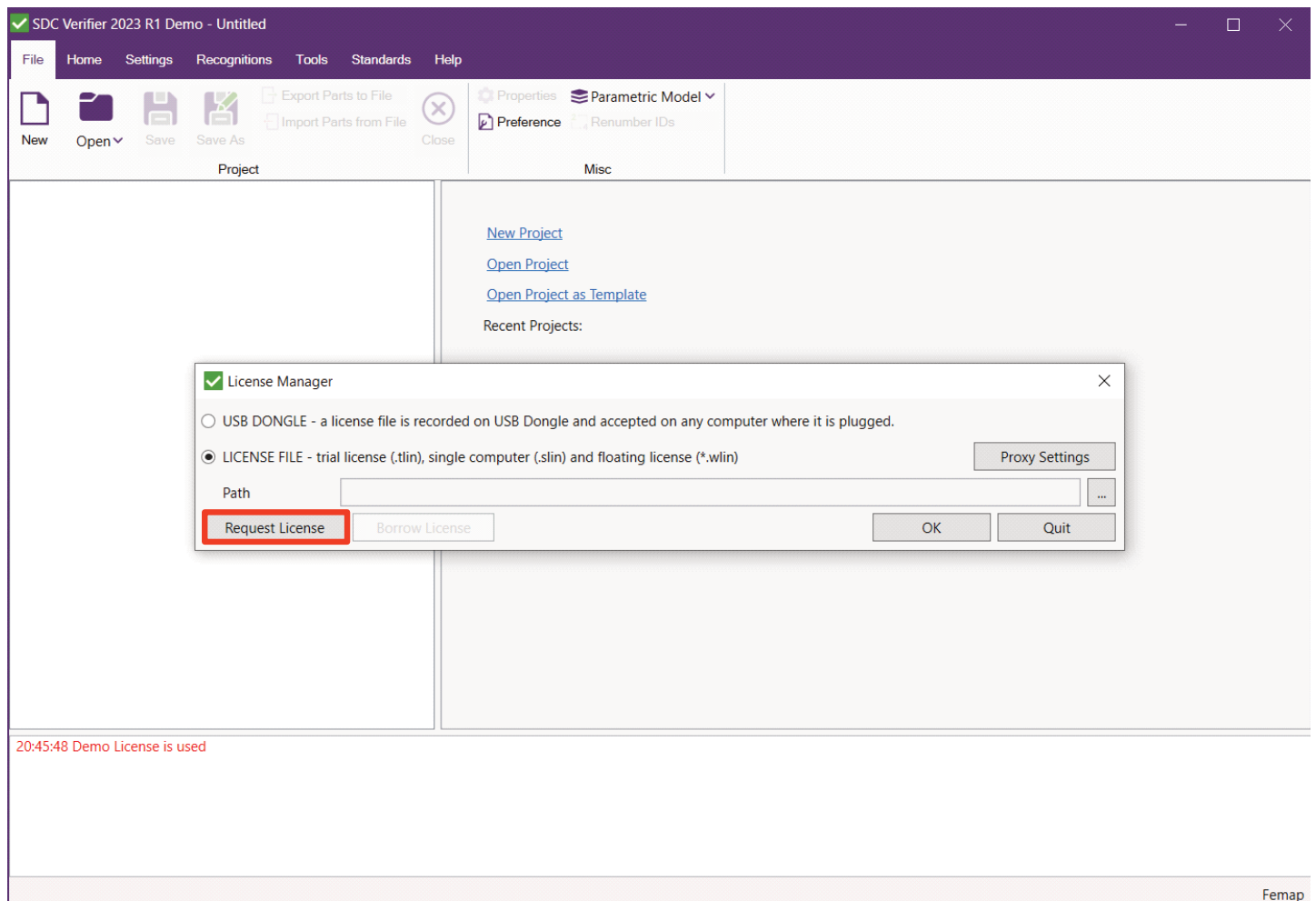


RENEWABLE ENERGY

Step 1

- *Install SDC Verifier*
- *Run SDC Verifier*
- *Press “Request a license”*

You can also view video tutorial on [how to request trial license](#)



Step 2

- *Select “Trial”*
- *Fill in contact info*
- *Select your CAE program*
- *Select all modules*
- *Press “Generate”*

SDC Verifier 2023 R1 Demo - Untitled

Request License

License Type

- TRIAL - works on list of computers and has expiration date.
- SINGLE COMPUTER - license for one computer
- FLOATING - fixed number of users can connect to the license server simultaneously
- USB DONGLE - Update my license file on this USB flash drive:

Refresh

Info

Company: My Company

Contact Person: First Name Last Name

E-mail (Corporate): firstnamelastname@mycompany.com

Telephone: +1234567890

CAE Programs: Femap Simcenter Ansys

Modules

| | | | | | |
|--|---|---|---|--|--|
| <input checked="" type="checkbox"/> Beam Buckling | <input checked="" type="checkbox"/> Plate Buckling | <input checked="" type="checkbox"/> Weld Strength | <input checked="" type="checkbox"/> Fatigue | <input checked="" type="checkbox"/> Optimization | <input checked="" type="checkbox"/> Report |
| <input checked="" type="checkbox"/> AISC Beam Buckling | <input checked="" type="checkbox"/> Eurocode3 Beam Buckling | <input checked="" type="checkbox"/> Beam Buckling and Joint | <input checked="" type="checkbox"/> FKM Fatigue | <input checked="" type="checkbox"/> SDC API | <input checked="" type="checkbox"/> Bolt |

Generate

Request Data (Press Send using Mail Client or copy and send manually to support@sdcverifier.com)

Send Cancel

20:45:48 Demo L

Femap

Step 3

Press “Send” to deliver a request to our support and sales team. The license will be delivered as soon as possible.

The standard license is valid for 15 days.

Request License

License Type

TRIAL - works on list of computers and has expiration date.

SINGLE COMPUTER - license for one computer

FLOATING - fixed number of users can connect to the license server simultaneously

USB DONGLE - Update my license file on this USB flash drive:

Info

Company:

Contact Person:

E-mail (Corporate):

Telephone:

CAE Programs: Femap Simcenter Ansys

Modules

Beam Buckling Plate Buckling Weld Strength Fatigue Optimization Report

AISC Beam Buckling Eurocode3 Beam Buckling Beam Buckling and Joint FKM Fatigue SDC API Bolt

Request Data (Press Send using Mail Client or copy and send manually to support@sdcverifier.com)

Registration request

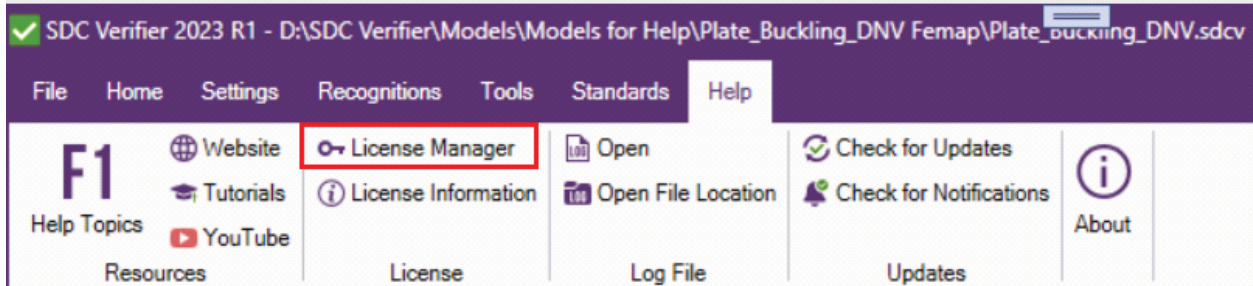
Product Type: SDC Verifier
License Type: Trial
Company: My Company
Contact Person: First Name Last Name
Phone: +1234567890
Email: firstnamelastname@mycompany.com
CAE Programs: Ansys; Femap; Simcenter;
Modules: Beam Buckling; Plate Buckling; Fatigue; Weld Strength; Report; AISC Beam Buckling; Eurocode3 Beam Buckling; Beam Buckling and Joint; Optimization;
SDC API; Bolt; FKM Fatigue;
Version: 23.1

Trial License Data:

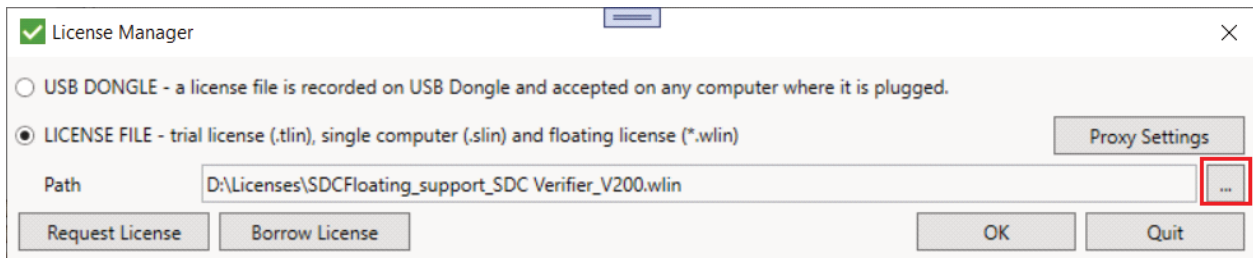
HIHFBBKMBAGDIODDDLNB OPJBPLKGGCCOILNCGMCMNH NJNHHLCHIPPKOLIHJMKL HIBABIEAPPJKOBCANEKG ELNLAEBEPHEMGPMOFHAM
FCNIFKJHDBMCFDAPBKFJ NDLIMKILJCHIKFDNBEED JNKNGLCIFDCOHILFCFNF FEBJLPBEHOIFEDJDHJII NDMJUCBHCFCDDDFOCMK GFBHGIALLABIMPBJDAPD
CEMKEDEAPBODKOCDEKKEG LWINDMJHCBHCFEOKRBDLHEKANKMCMCNWPKKJLJKLONEAOLHBEIOMLHUNINLBCRIALNCOBAKKBAGFIRK

ENABLE SDC VERIFIER TRIAL LICENSE

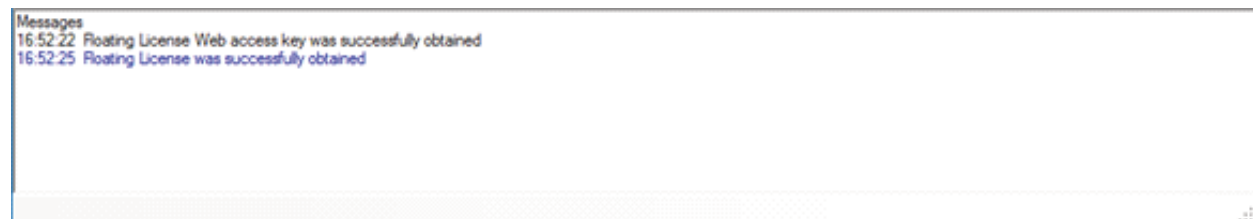
Open SDC Verifier, then open License Manager.



Select a path to SDC Verifier trial license file.



The following message should appear. Start working.



You need to have an internet connection and add the following resources to the firewall allowlist (you can check it with your IT department):

- *floating.sdcverifier.com,*
- *backupfloating.sdcverifier.com,*
- *floating.sdcverifier.nl,*
- *floating1.sdcverifier.nl*

STEP-BY-STEP TUTORIALS

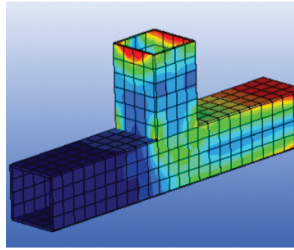
Multiple step-by-step tutorials are available on our website to help you get started with SDC Verifier and guarantee a smooth onboarding process.

<https://sdcverifier.com/tutorials/>



Software Consultancy Articles Education About Contacts

Get Started

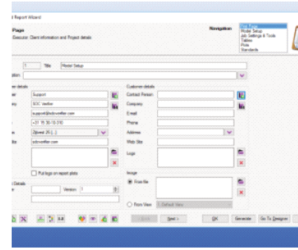


7 Feb 2018 v5.0

Ansys Simcenter Femap

An introduction tutorial to get familiar with the software. It demonstrates how to create a project, define loads and load combinations, and quickly generate calculation results report. This step-by-step tutorial is designed to get you started with main SDC Verifier features: Launch SDC Verifier; Creating new Eurocode3 Fatigue

Report Wizard

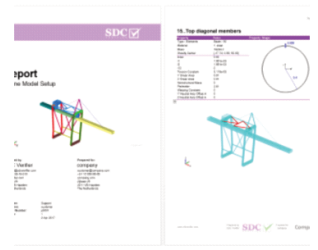


4 Apr 2016 v4.0

Femap

The tutorial demonstrates how to prepare full calculation report using Report Wizard. Model description, plots, and various tables are explained in details. This step-by-step tutorial is designed to cover SDC Verifier topics, namely: Template Reports; First... page settings; Model entities in report; Predefined API ISO Norsok

Report Designer

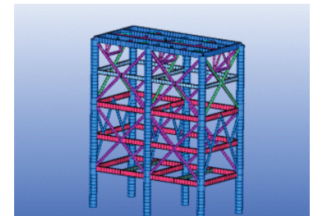


7 Feb 2018 v5.0

Ansys Simcenter Femap

Report Designer is an advanced tool to create fully customisable reports with control over the structure and possibility to modify and regenerate a part of the report.

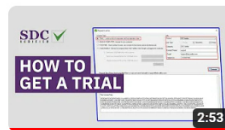
AISC 360-10



Subscribe to our YouTube channel, where we regularly post educational content about SDC Verifier

<https://www.youtube.com/@SDCVerifier>

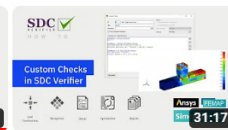
SDC Verifier How To ▶ Play all



How to Request a Trial in SDC Verifier 2022 R2
SDC Verifier
106 views • 1 month ago



Introduction to SDC API
SDC Verifier
509 views • 2 years ago



How to create Custom Checks in SDC Verifier
SDC Verifier
461 views • 2 years ago

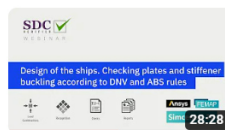


Optimization Module | SDC Verifier 2020
SDC Verifier
282 views • 2 years ago

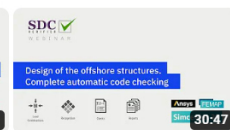


New Report Designer Demo | SDC Verifier 2020
SDC Verifier
268 views • 2 years ago

Webinars ▶ Play all



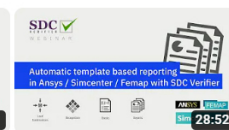
Design of the ships, checking plates and stiffener bucklin...
SDC Verifier
1.1K views • 2 years ago



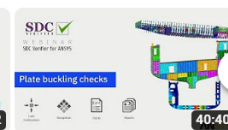
Design of the offshore structures Complete...
SDC Verifier
687 views • 2 years ago



Fatigue checks of the crane structures according...
SDC Verifier
2.3K views • 2 years ago



Automatic template based reporting in Ansys Simcent...
SDC Verifier
307 views • 3 years ago



Webinar #6 (Ansys) - Plate buckling checks
SDC Verifier
1.3K views • 3 years ago

TESTIMONIALS

“SDC saves a lot of time on buckling analysis (for example thanks to the panel finder), but also reduces the check error probability compared to a hand-check with .xls spreadsheets.”

Stéphanie Lechat
Team leader



**EASA CERTIFIED
PASSENGER-TO-FREIGHTER CONVERSION**

contact us - sales.contact@akka.eu

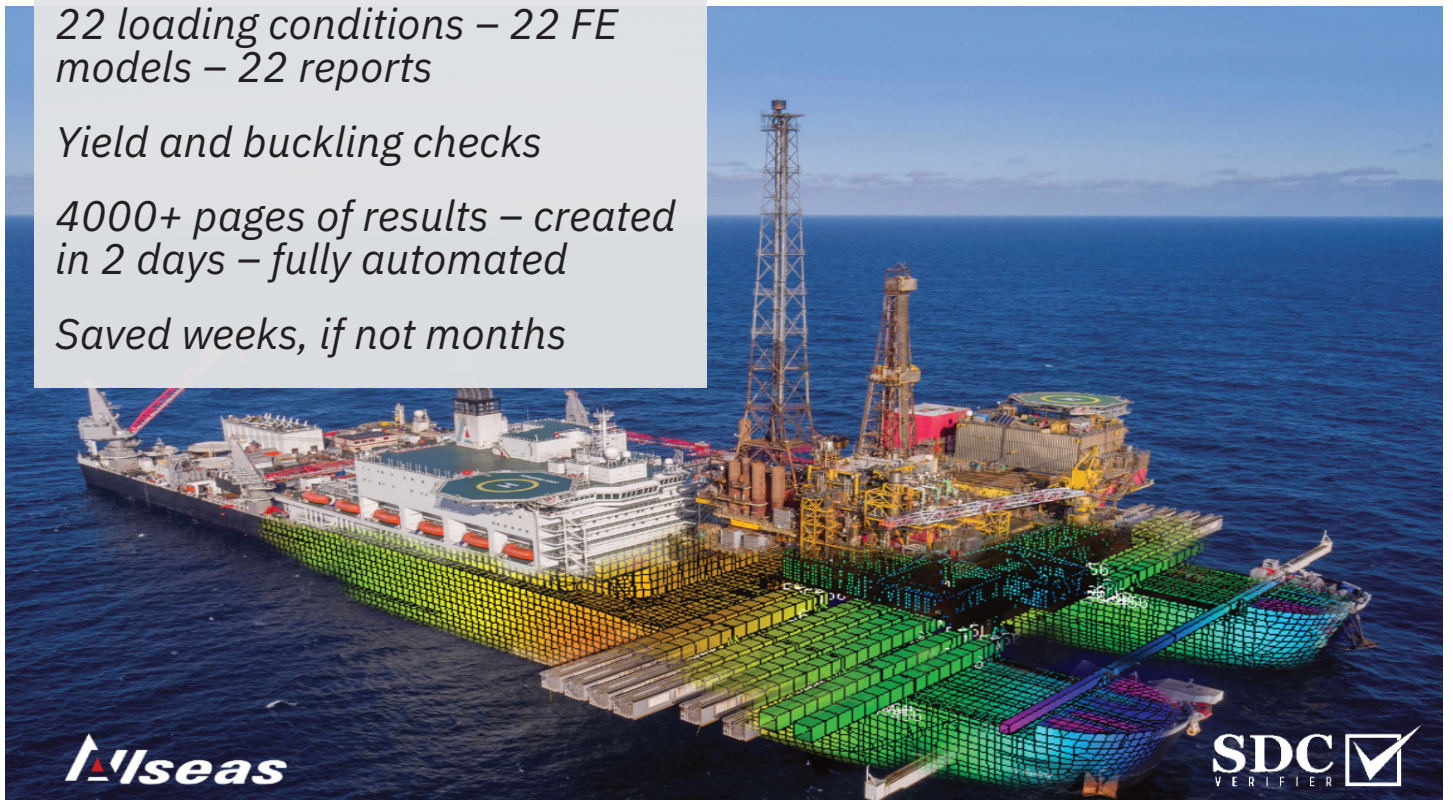
Vessel Global Hull structural check

22 loading conditions – 22 FE models – 22 reports

Yield and buckling checks

4000+ pages of results – created in 2 days – fully automated

Saved weeks, if not months



Iseas

SDC
VERIFIER



Oleg Ishchuk, COO – general business and partnership inquiries, development, demonstration, and training requests

oleg@sdcverifier.com

Bohdan Solonko, business development manager – trial license, demonstration, training, quotation, partnership, and resellers' requests

bohdan.solonko@sdcverifier.com

Roman Samchuk, engineering project manager – requests for engineering consultancy services

roman.samchuk@sdcverifier.com

Support team – any technical questions, requests or issues

support@sdcverifier.com